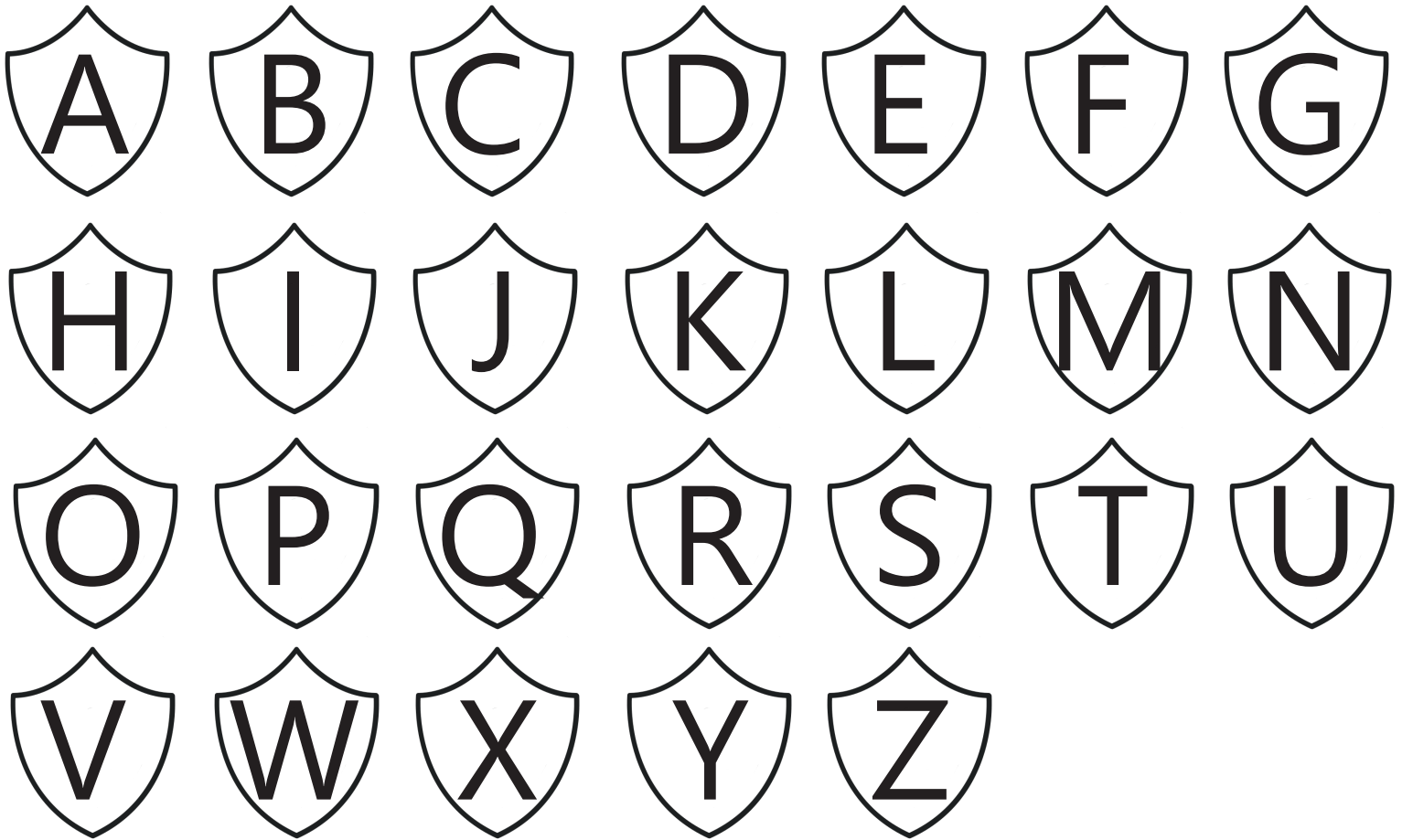
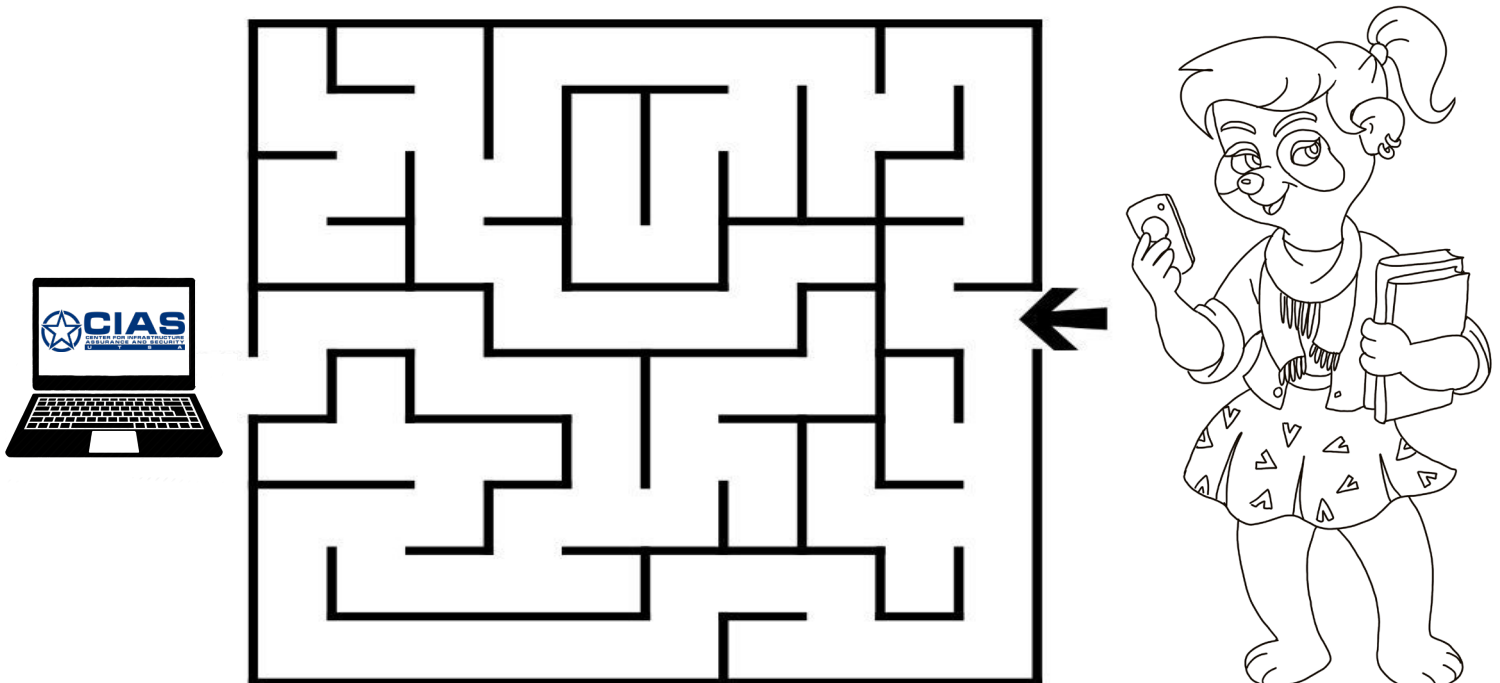


Color in the letters found in the word **SECURITY**



Can you help Ada CyBear find the laptop computer?

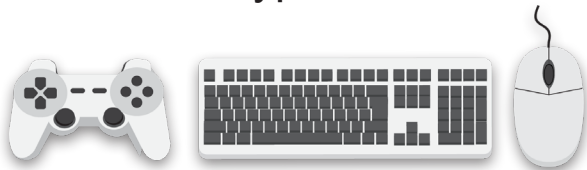


Making Inferences

What Am I?

Use details from each description below to make decisions about the items. Circle the picture that answers the riddle.

- 1 Sometimes, I have a chord. I can also help you navigate on the computer, but I can't type. What am I?



- 2 I am a wireless device. I help you listen to music, but you have to wear me over your ears. What am I?



- 3 You put me on your head. When looking through me, what you see isn't really in front of you. What am I?



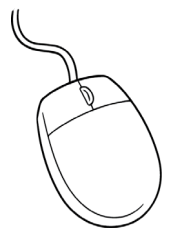
- 4 I love to play games. I am also a handheld device. I can be used with one hand or two. What am I?



Describing Words

Draw a line between each sentence and the picture that shows which mouse it describes.

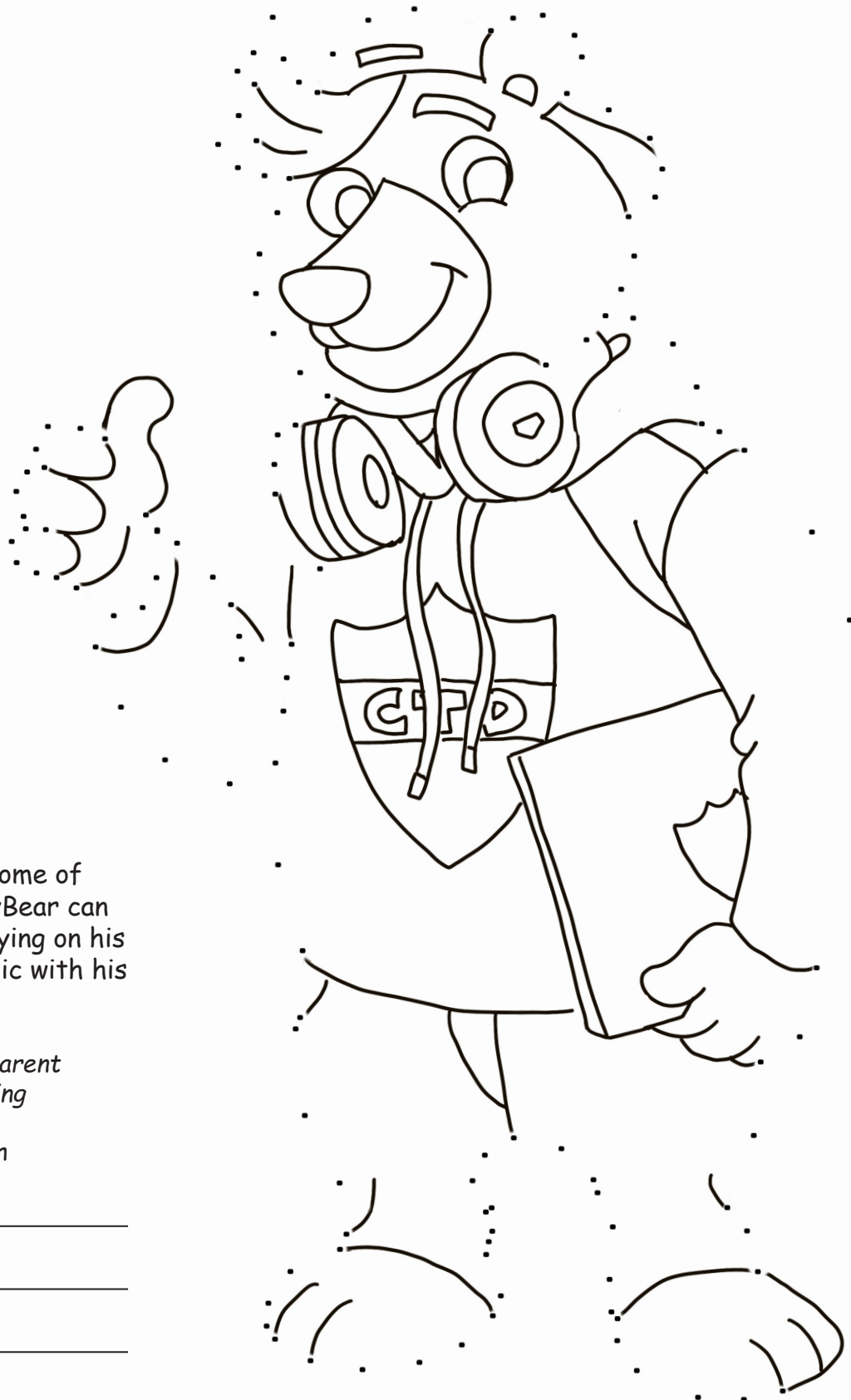
- 5 It is small and comes in different colors. It likes to play hide and seek. It also likes to eat cheese!



- 6 It comes in different colors. It is small. It can be attached with a chord or be wireless.



Connect the dots, and color the picture.



NOW TRY THIS: List some of the possible ways Vint CyBear can stay safe online when playing on his laptop or listening to music with his wireless headphones.

CLUE: Read article with a parent or adult about "Online Gaming Tips for Parents", found on CultureofCybersecurity.com

1. _____
2. _____
3. _____
4. _____

Internet Connected Devices

Cross out every other letter to name the Internet connected device. Write the name on the line. The first one has been done for you.

c a o c m e p g u i t b e l r



1. computer

s t m f a e r g t k t g v c



2. _____

g c a h m k e p s y



3. _____

l j i d g v h x t q b f u i l p b



4. _____

r z a x d p i b o k



5. _____

c l o a f r f e e f e d m l a i k t e l r



6. _____

f n r p i o d t g s e



7. _____

w s e d b f c u a r m



8. _____

Practice Capital Words

A sentence always begins with a capital letter.

Correctly copy each sentence on the lines below.



1 he sits in a chair.

2 he plays a game.

3 the music is loud.

4 he wears a hat.

5 he has fun.

Periods

A telling sentence ends in a period. Read each group of words below. Fill in the circle next to the sentence that correctly uses a period.

1

- ☐ The bear is in the chair.
- ☐ the bear is in the chair
- ☐ the bear is on the chair

5

- ☐ the computer uses a keyboard
- ☐ The computer uses a keyboard.
- ☐ the computer uses a keyboard.

2

- ☐ The computer is turned on
- ☐ The computer is turned on.
- ☐ the computer is turned on.

6

- ☐ The computer needs a mouse.
- ☐ the computer needs a mouse
- ☐ The computer needs a mouse

3

- ☐ The bear wears glasses
- ☐ The bear wears glasses.
- ☐ the bear wears glasses

4

- ☐ the computer has a webcam
- ☐ The computer has a webcam
- ☐ The computer has a webcam.



Word Order

Words in a sentence must be in the correct order to make sense.

Read each group of words below. Draw a line under the word that should go first in each sentence.

1 information. A hacker steals

4 Cell phones information. use

2 cell phones. We use

5 Protect your phone hackers. from

3 are wireless. Cell phones

Rewrite each group of words in the correct order.

1 _____

2 _____

3 _____

4 _____

5 _____

Developing Vocabulary

Smart Homes

Do you live in a smart home? That is where electronic devices are connected to the Internet to help you and your family stay connected at home. You can use your laptop computer or mobile phone to connect to smart devices like a webcam. You can also use your computer or mobile phone to turn on the coffee maker, change the channel on the radio, or turn light bulbs on and off with the Internet!



Use the code below to learn what some of the words in the story mean. Copy the matching letters in the blanks.

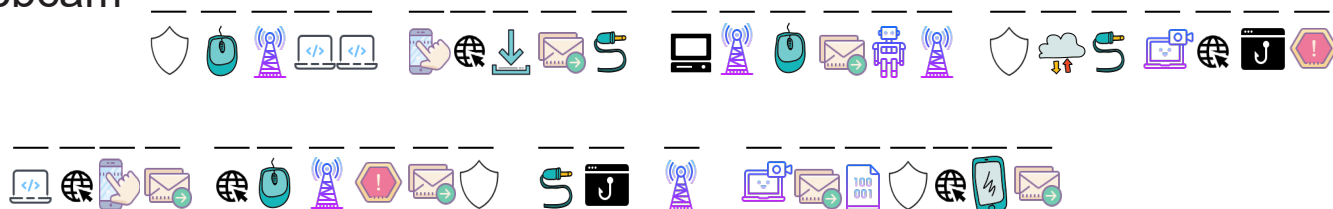
1. Internet



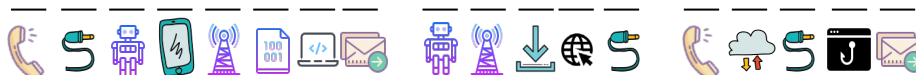
2. laptop computer



3. webcam



4. mobile phone



Name those Parts

Use the words in the box to identify the parts of computer system.

monitor

keyboard

mouse


modem



Eye Spy with My Little Eye

How many wireless devices can you identify? Count the devices and write the number in the boxes at the bottom.

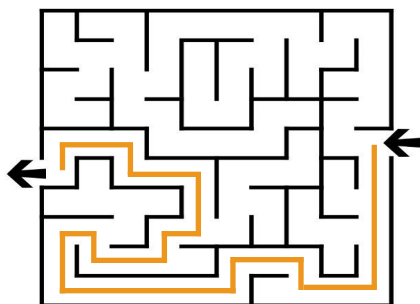


	<input type="text"/>		<input type="text"/>		<input type="text"/>		<input type="text"/>
	<input type="text"/>		<input type="text"/>		<input type="text"/>		<input type="text"/>

NOW TRY THIS: With the help of a teacher or other adult, use the Cyber Threat Guardian card game to identify what types of cyber threats may target internet connected devices. Next, identify what defenses can guard against cyber attacks.

CyBear Activity Sheets - Answers

PAGE 1



PAGE 2

- 1.
- 2.
- 3.
- 4.
- 5.
- 6.

PAGE 3

Possible answers include, but are not limited to:
Parental controls; Check ratings; Set boundaries;
Think before you act; know your friends online.

PAGE 4

1. computer
2. smart tv
3. games
4. light bulb
5. radio
6. coffee maker
7. fridge
8. webcam

PAGE 5

1. He sits in a chair.
2. He plays a game.
3. The music is loud.
4. He wears a hat.
5. He has fun.

PAGE 6

1. The bear is in the chair.
2. The computer is turned on.
3. The bear wears glasses.
4. The computer has a webcam.
5. The computer uses a keyboard.
6. The computer needs a mouse.

PAGE 7

1. A hacker steals information.
2. We use cell phones.
3. Cell phones are wireless.
4. Cell phones use information.
5. Protect your phone from hackers.

PAGE 8

1. system connecting computers
2. small portable computer
3. small video camera showing live images on a website
4. portable radio phone

PAGE 9

Top left: monitor
Top right: modem
Bottom left: keyboard
Bottom right: mouse

PAGE 10



Did you know? The CIAS cybersecurity card game, called **Cyber Threat Guardian**, is ideal for students in grades K-2. It's available through our online store >> CIASMarketplace.com.

Join the Fun & #DefendYourNetwork Today!



CIAS

Follow the CIAS: [in](https://www.linkedin.com/company/cias) [f](https://www.facebook.com/cias) [t](https://twitter.com/cias)